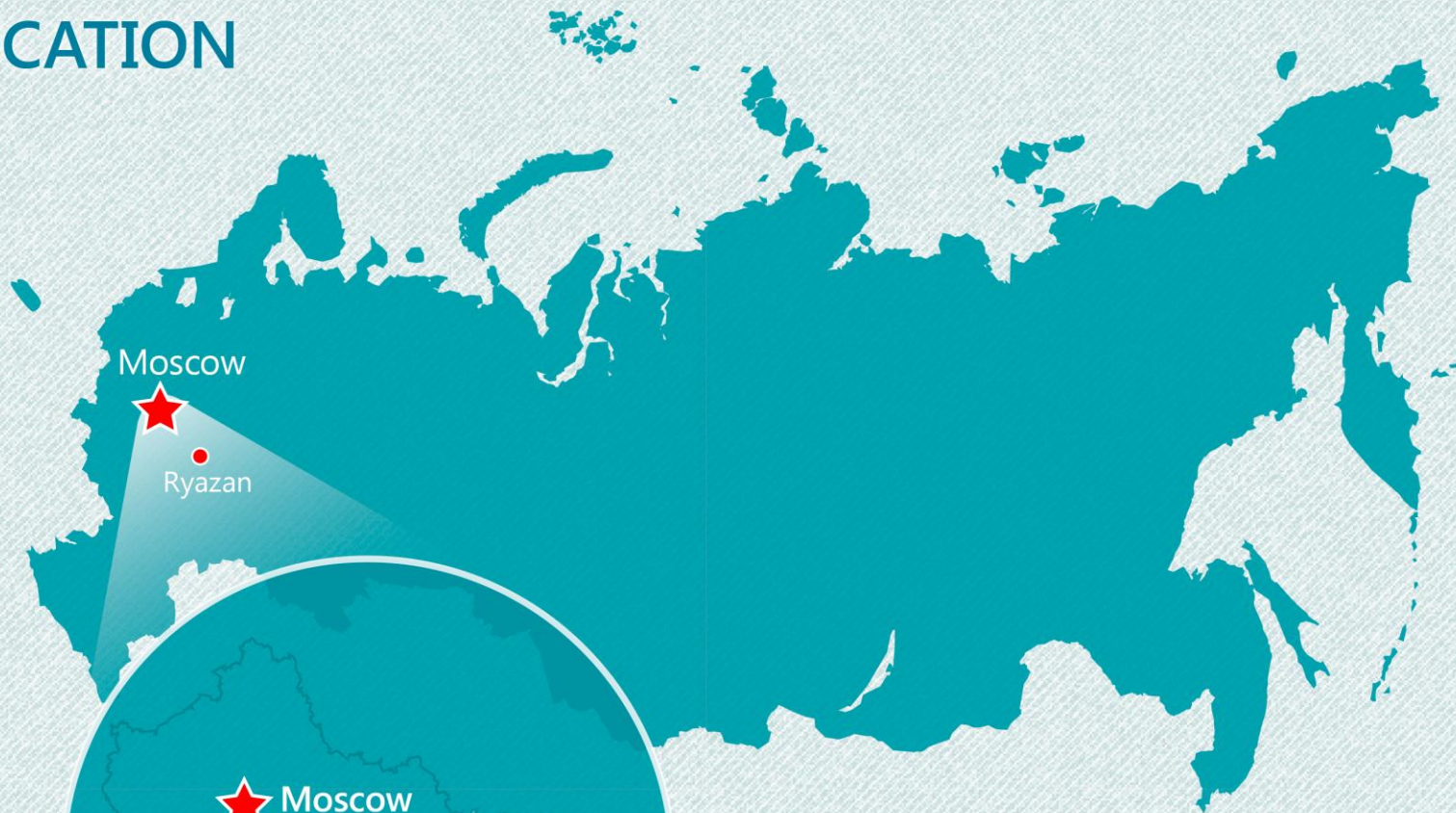




• Ryazan

INVESTMENT POTENTIAL OF RYAZAN REGION

LOCATION



-  — The area of the region **39 600 km²**
-  — Population **1 130 000 people**
-  — **40 000 000** potential consumers

TRANSPORT INFRASTRUCTURE



 **3 federal highways**

M-5 «Ural»

M-6 «Caspian»

P-132 «Kaluga–Tula–Ryazan»

 **2 railways**

Moscow–Ryazan–Ural

Moscow–Ryazan–Sochi



Waterways

Moscow–Ryazan–N. Novgorod

River port «Ryazan»

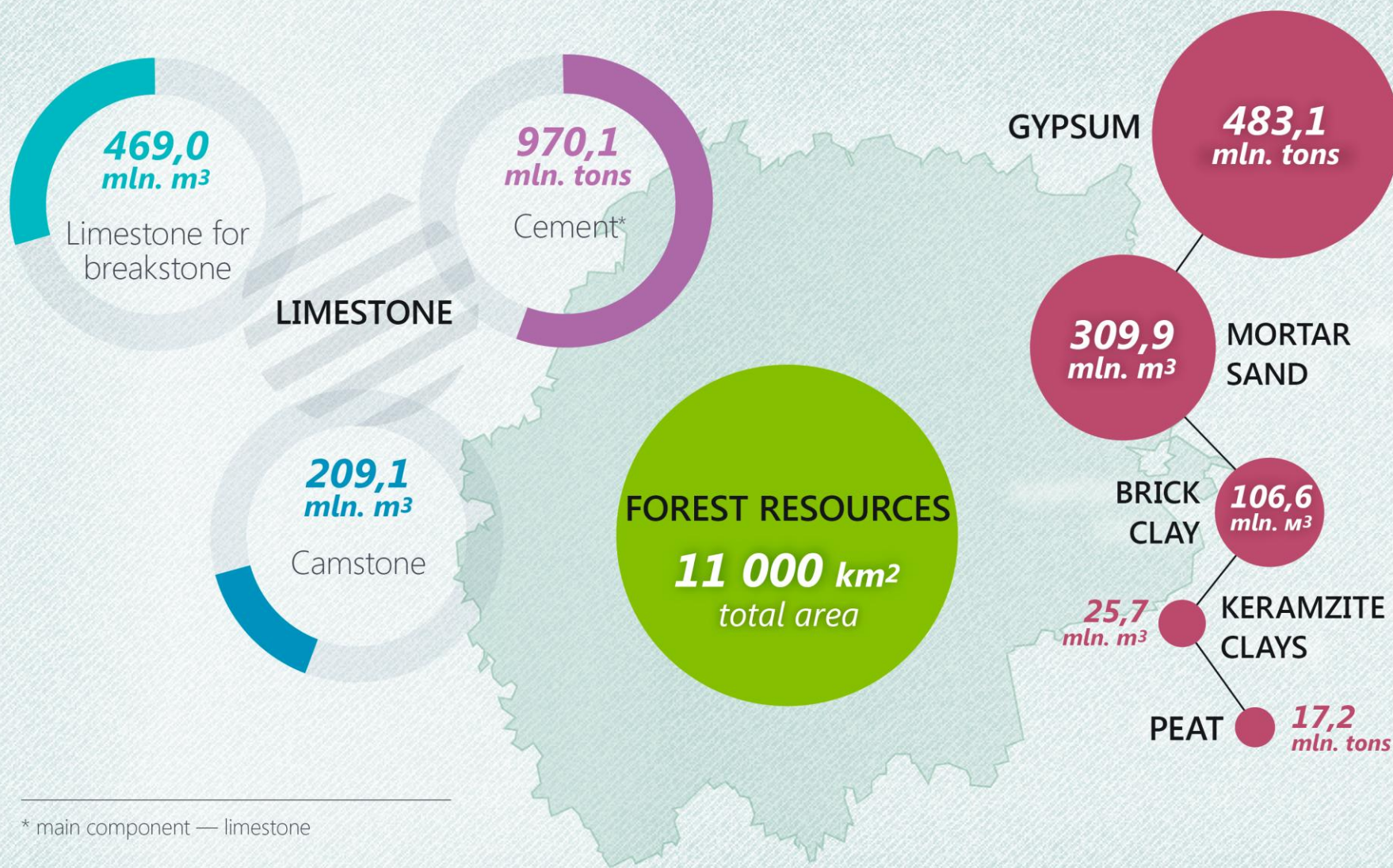
River port «Kasimov»



Airport «Protasovo»

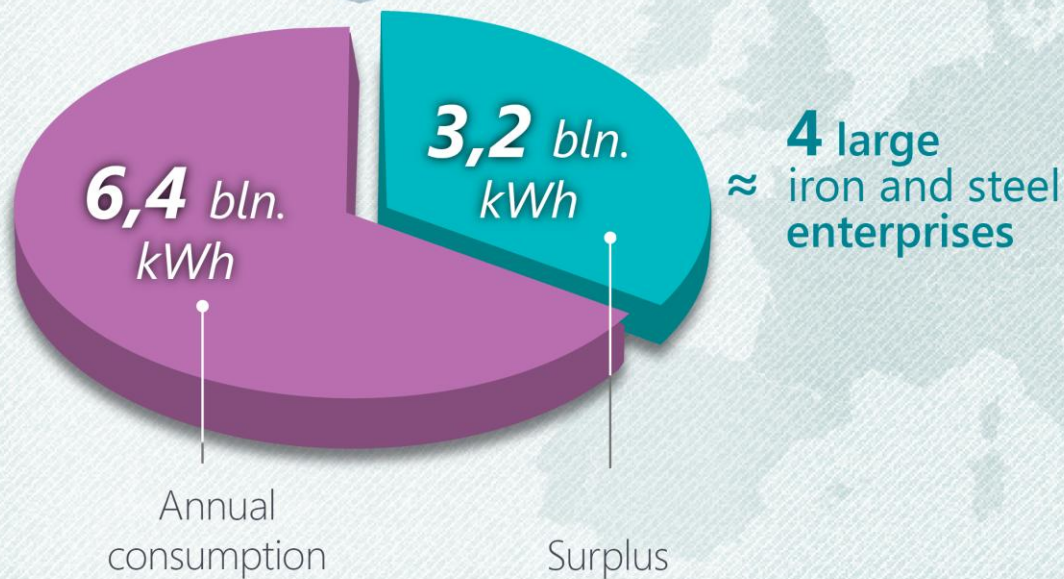
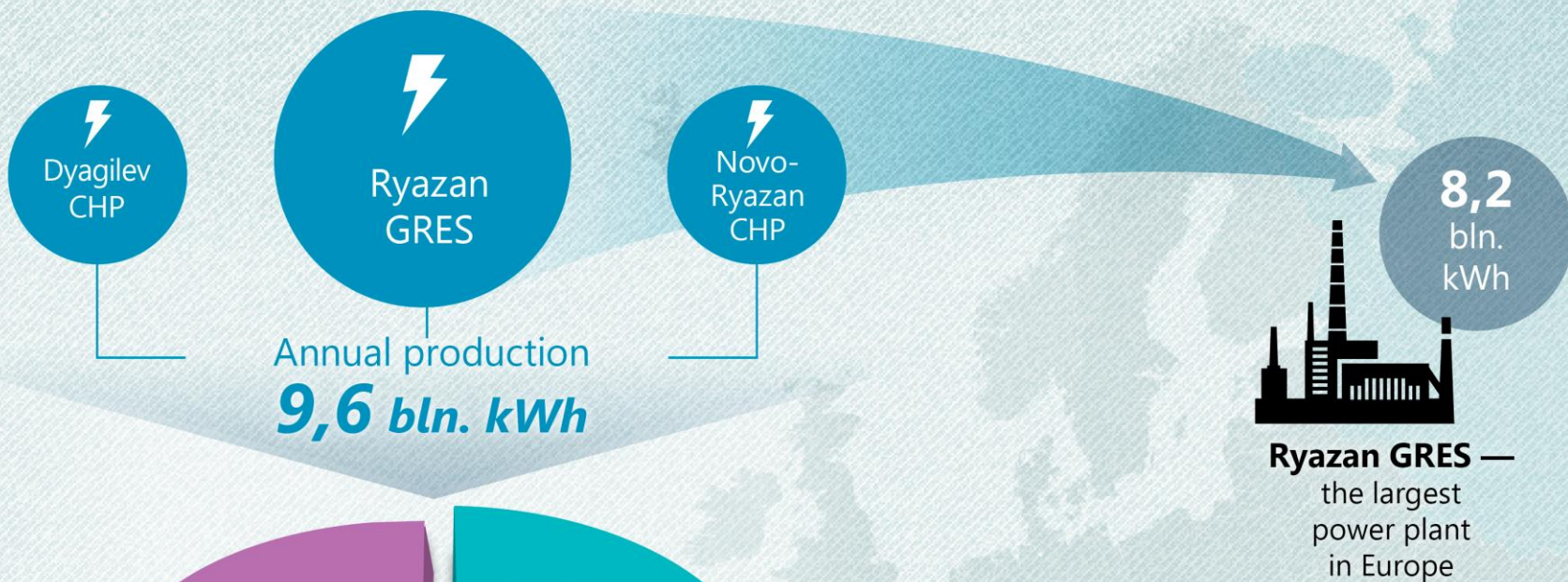
Project of the airport with cargo terminal

NATURAL RESOURCES OF THE RYAZAN REGION



* main component — limestone

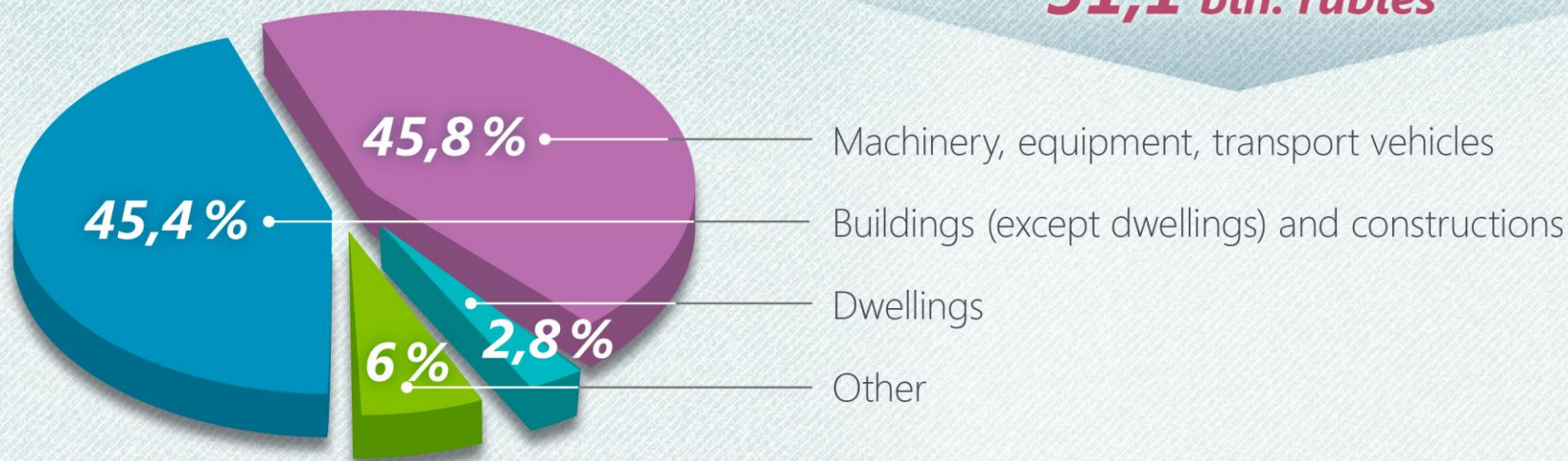
POWER RESOURCES



THE AMOUNT OF INVESTMENTS

FIXED CAPITAL INVESTMENTS

51,1 bln. rubles



FIXED-CAPITAL INVESTMENTS DIVIDED BY TYPES OF ECONOMIC ACTIVITY, *bln. Rub.*



LABOUR FORCE

Per year we train

19 000 professionals



Higher
education
professionals

laboring
men and
workers



— Management and Economy



— Agriculture



— IT



— Law and Humanities



— Healthcare



— Industry and Construction

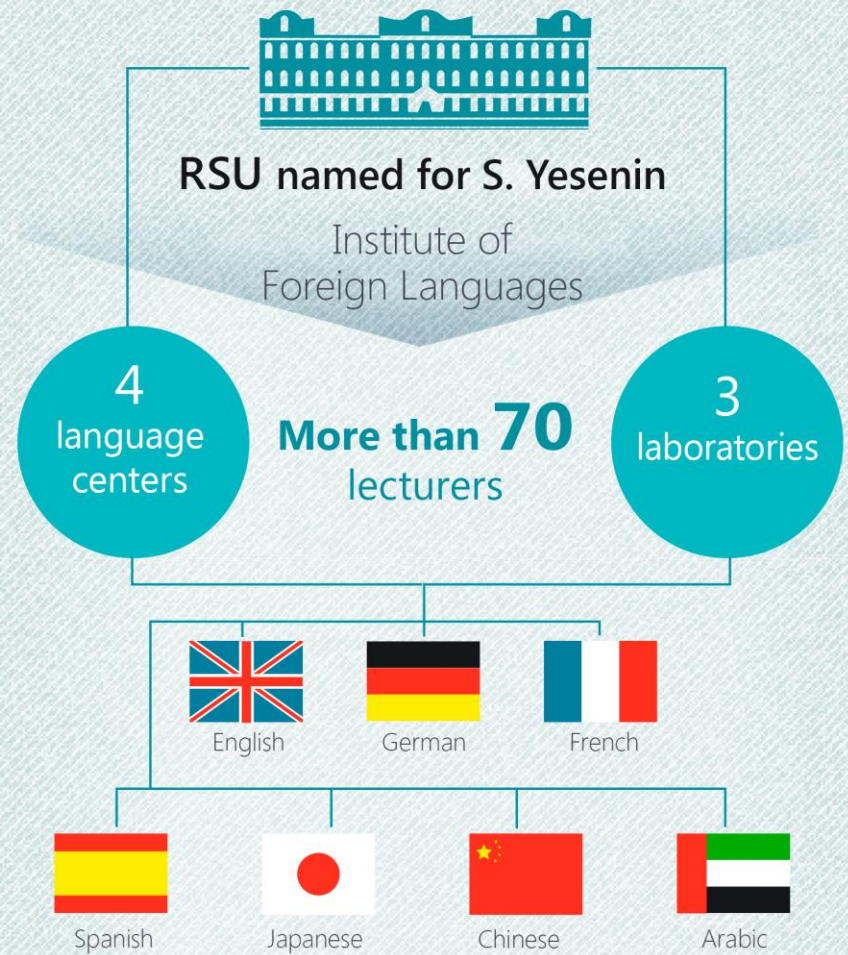
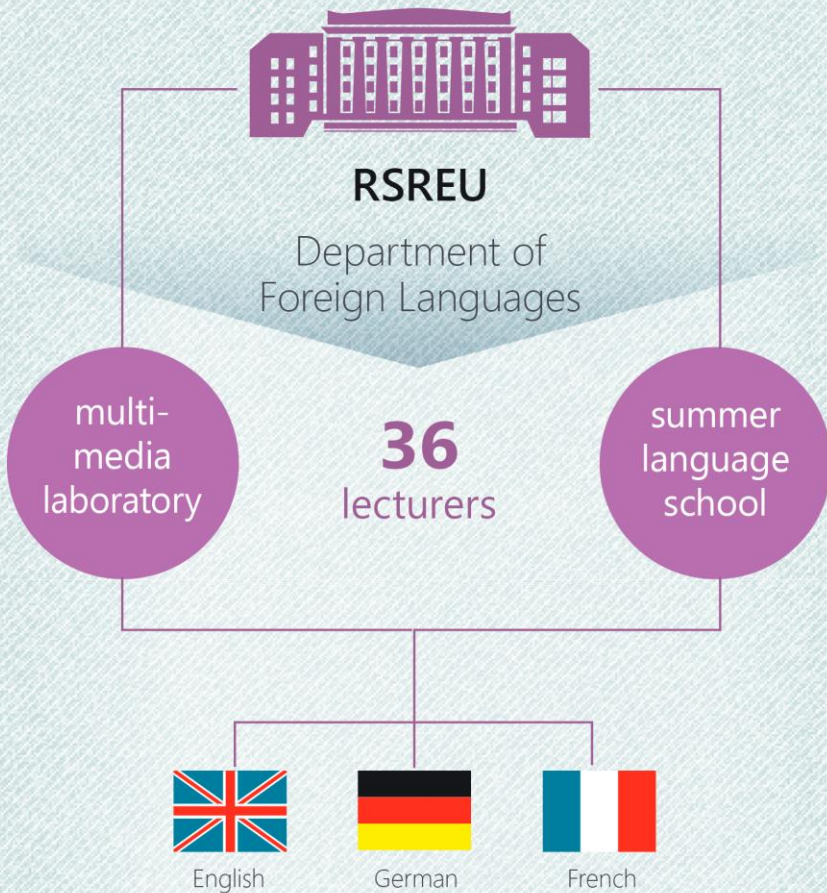


— Transport

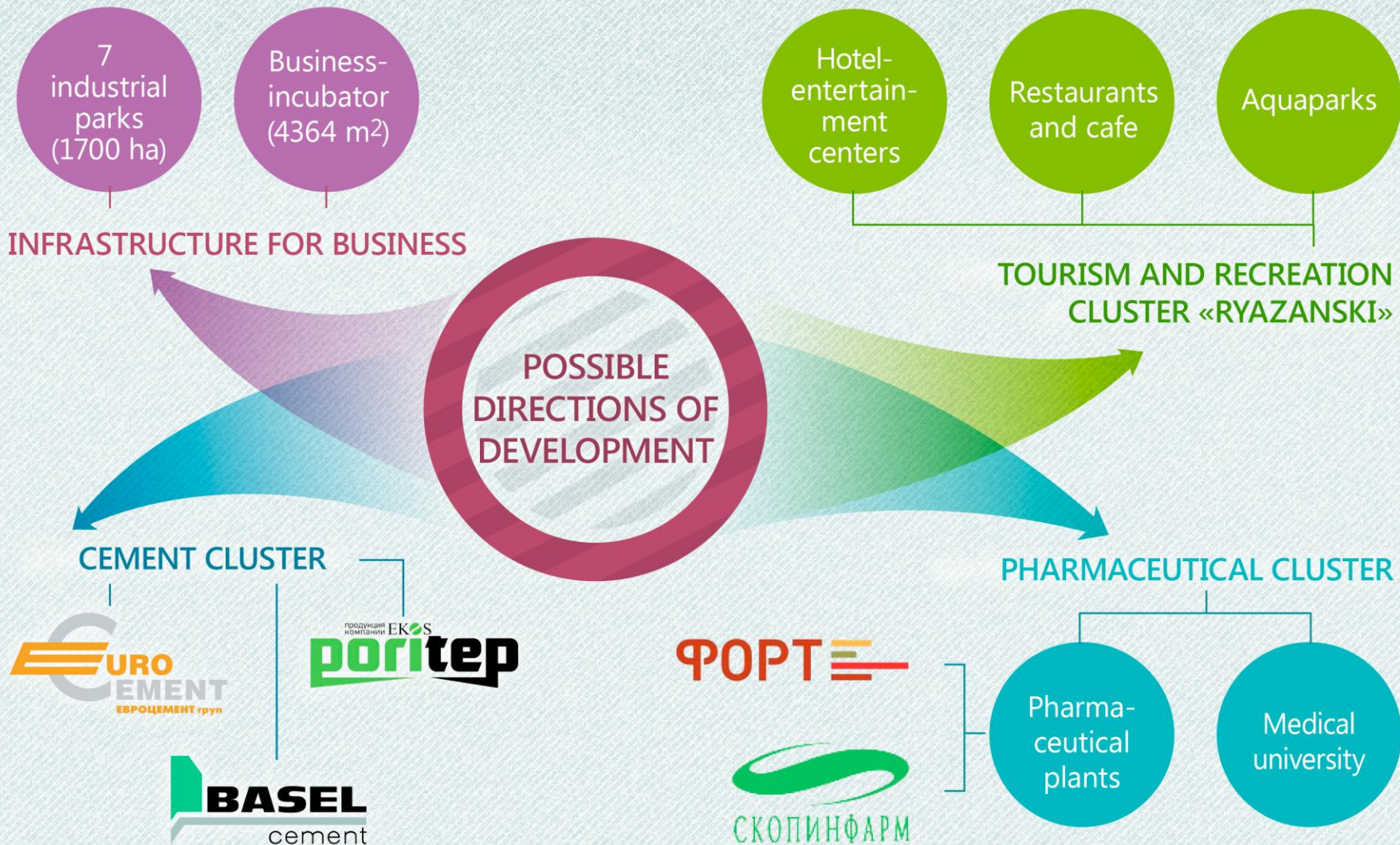


— Education and Culture

TEACHING FOREIGN LANGUAGES IN THE RYAZAN REGION



TERRITORIES FOR YOUR DEVELOPMENT



INDUSTRIAL SITE IN THE PRONSK MUNICIPAL DISTRICT



Project support
«RRCD»
(4912) 77-77-17
office@rrcd.ru
rrcd.ru

INDUSTRIAL SITE IN VARSKIE VILLAGE

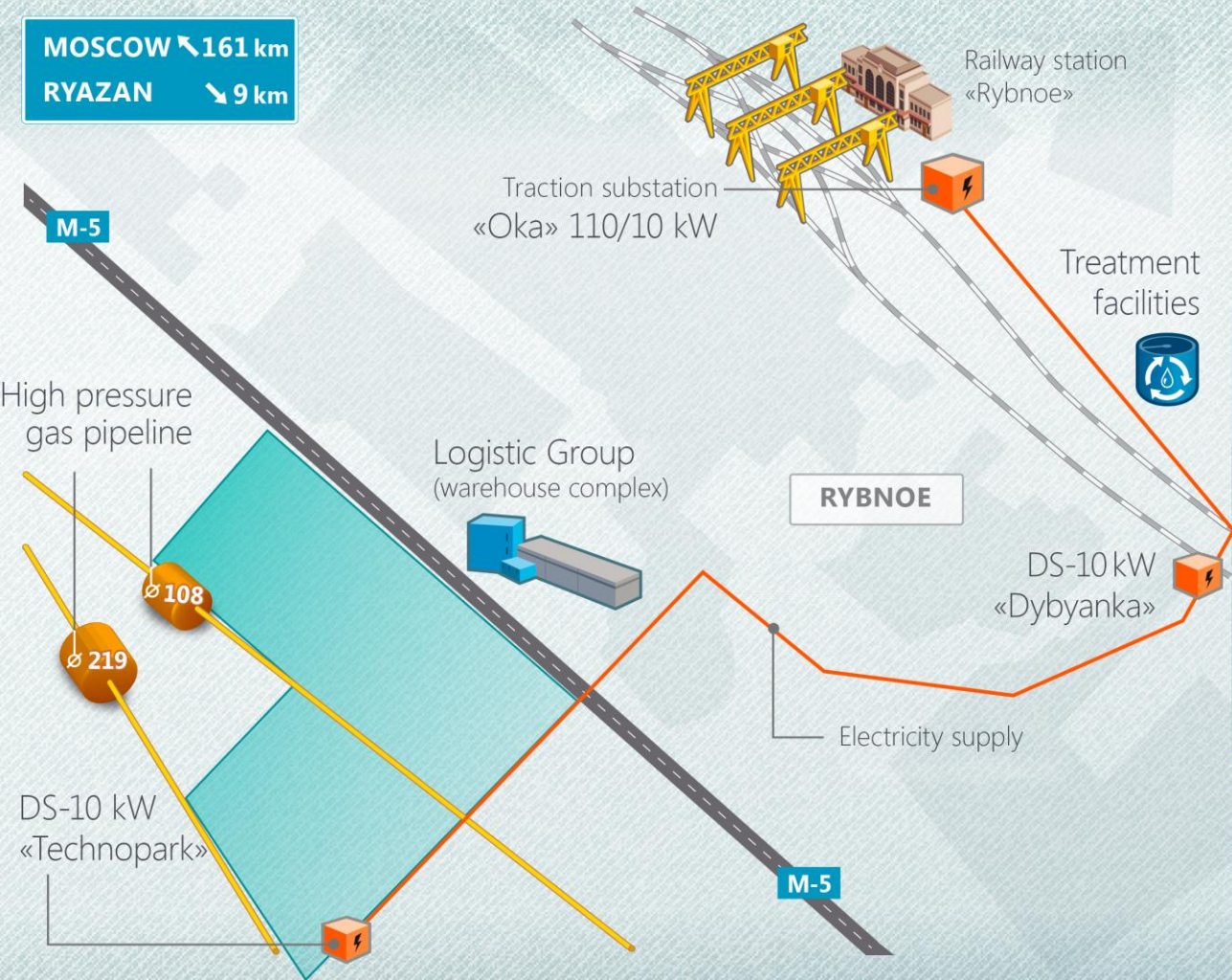


MOSCOW ↓ 180 km
RYAZAN ↓ 10 km
M5 ↓ 17 km

Project support
«RRCD»
(4912) 77-77-17
office@rrcd.ru
rrcd.ru

INDUSTRIAL SITE «RYBNOE-1»

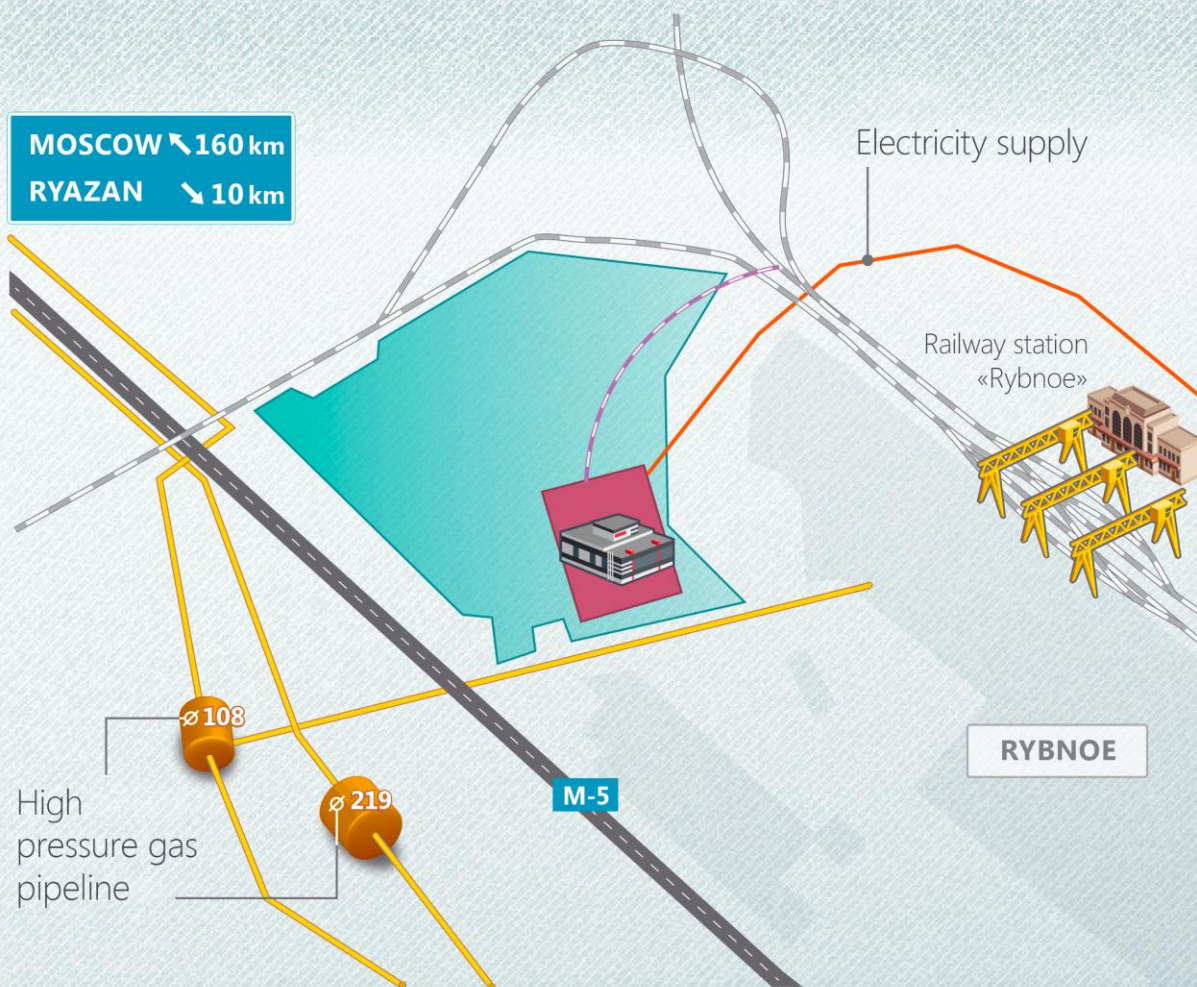
MOSCOW ↙ 161 km
RYAZAN ↘ 9 km



-  — **Area 138 ha**
-  — 20,7 MW
-  — High pressure gas pipeline
-  — Construction of intake station is planned
-  — Construction of treatment facilities is planned

Project support
«RRCD»
(4912) 77-77-17
office@rrcd.ru
rrcd.ru

INDUSTRIAL SITE «RYBNOE-2»



Area 103,47 ha,
free area 88,47 ha
private ownership



2,6 MW



High pressure
gas pipeline



Construction of intake
station is planned



Construction of treatment
facilities is planned



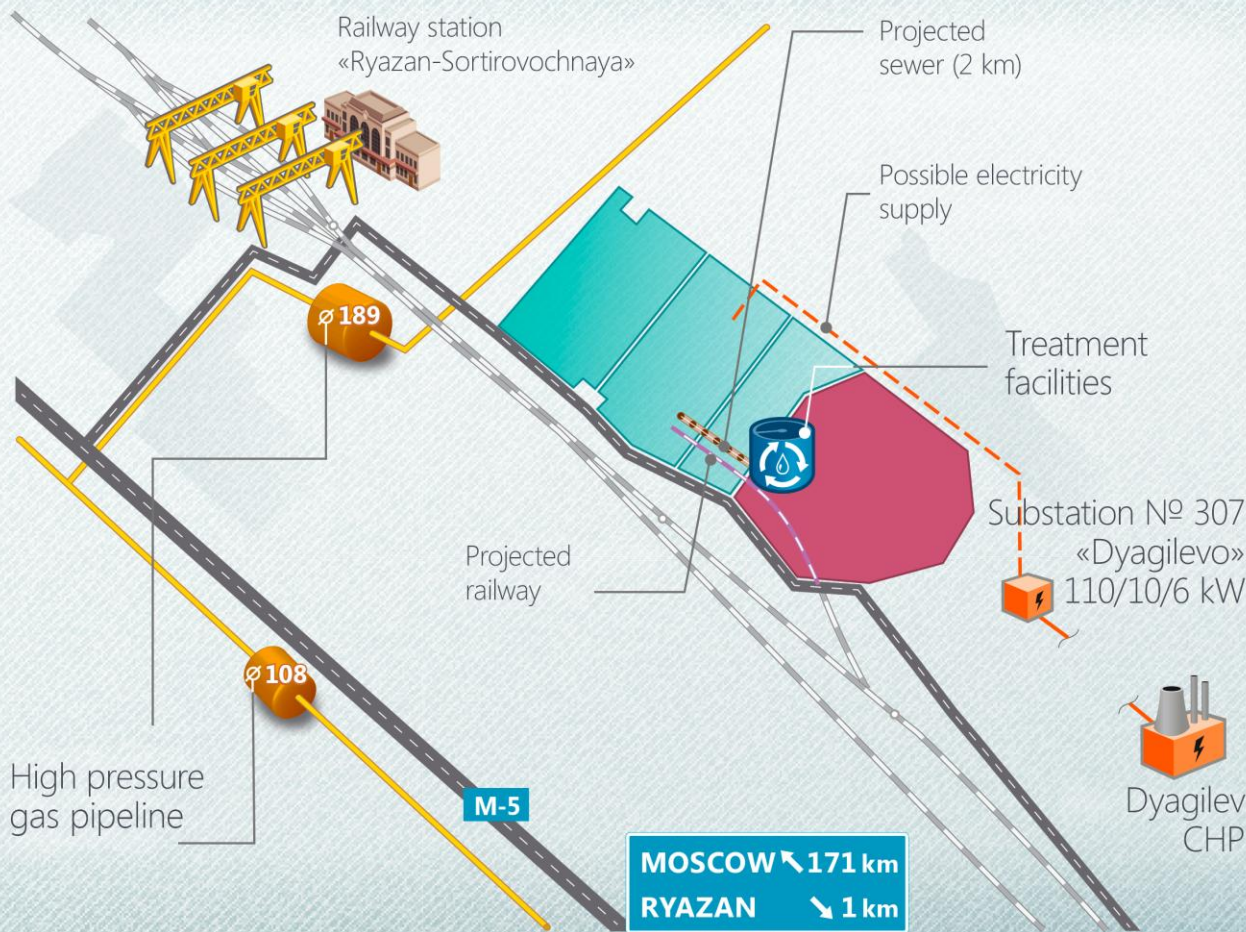
Resident:

БЕРВЕЛ
ЗАВОД ВЫСОКОПРОЧНОГО КРЕПЕЖА

Project support
«RRCD»

(4912) 77-77-17
office@rrcd.ru
rrcd.ru

INDUSTRIAL PARK «GORODISHCHE»



-  — **Area 173,8 ha**, private ownership
-  — 10 MW
-  — 110K m³ per hour
-  — 30 m³ per hour
-  — External water canal
-  — 4 000 m³ per day

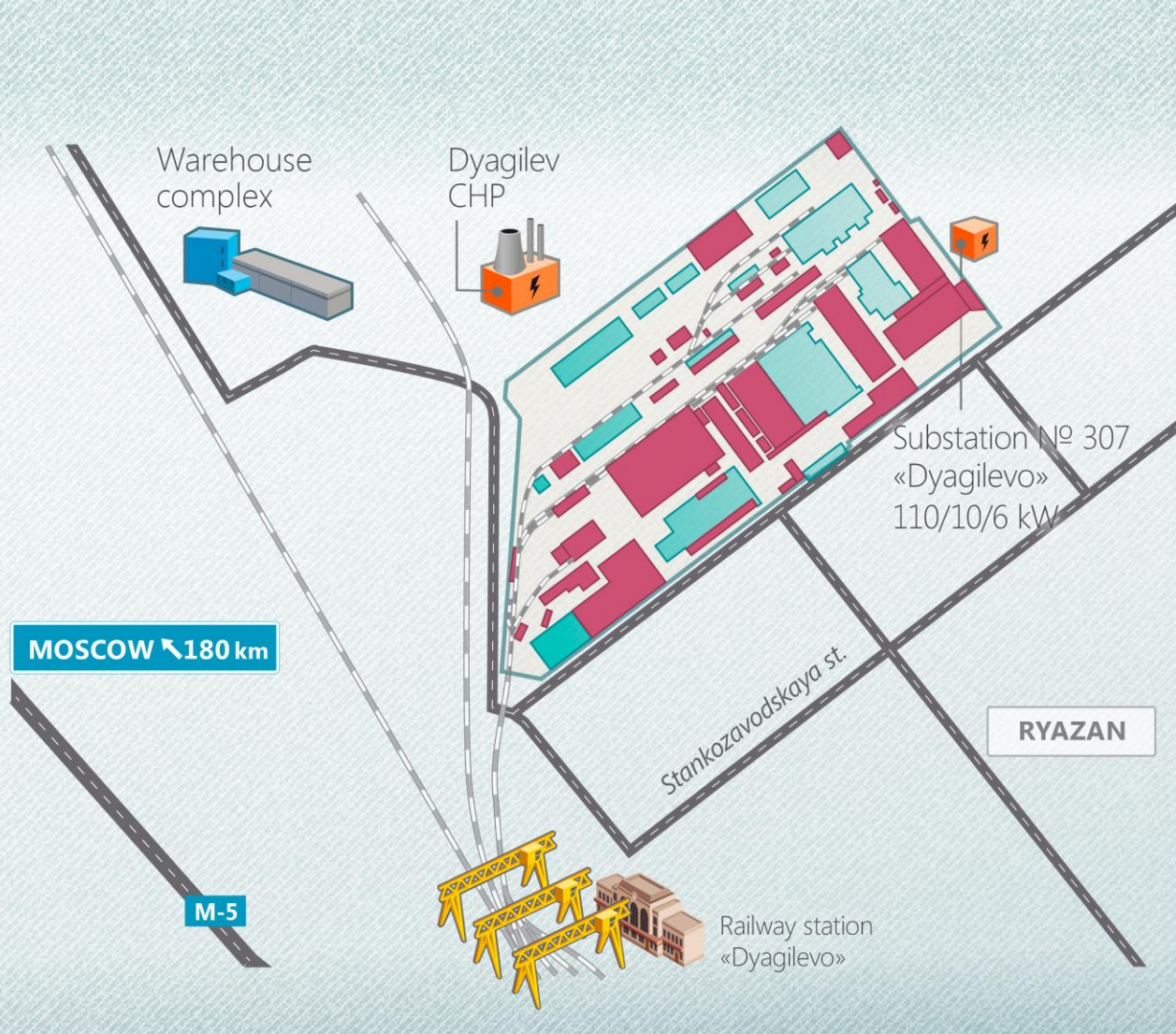
 — Resident:







Operating company
LLC «Safyan»



(4912) 24-08-81, 30-65-76
saphyan@leather.ru
fpkinvest.ru

INDUSTRIAL PARK «STANKOZAVODSKOY»



-  — 170 000 m² ind. premises, **free area 100 000 m²**, private ownership for land plot and buildings
-  — 25,9 MW
-  — 3 000 m³ per hour
-  — 29,6 Gcal per hour
-  — 7,2 m³ per hour

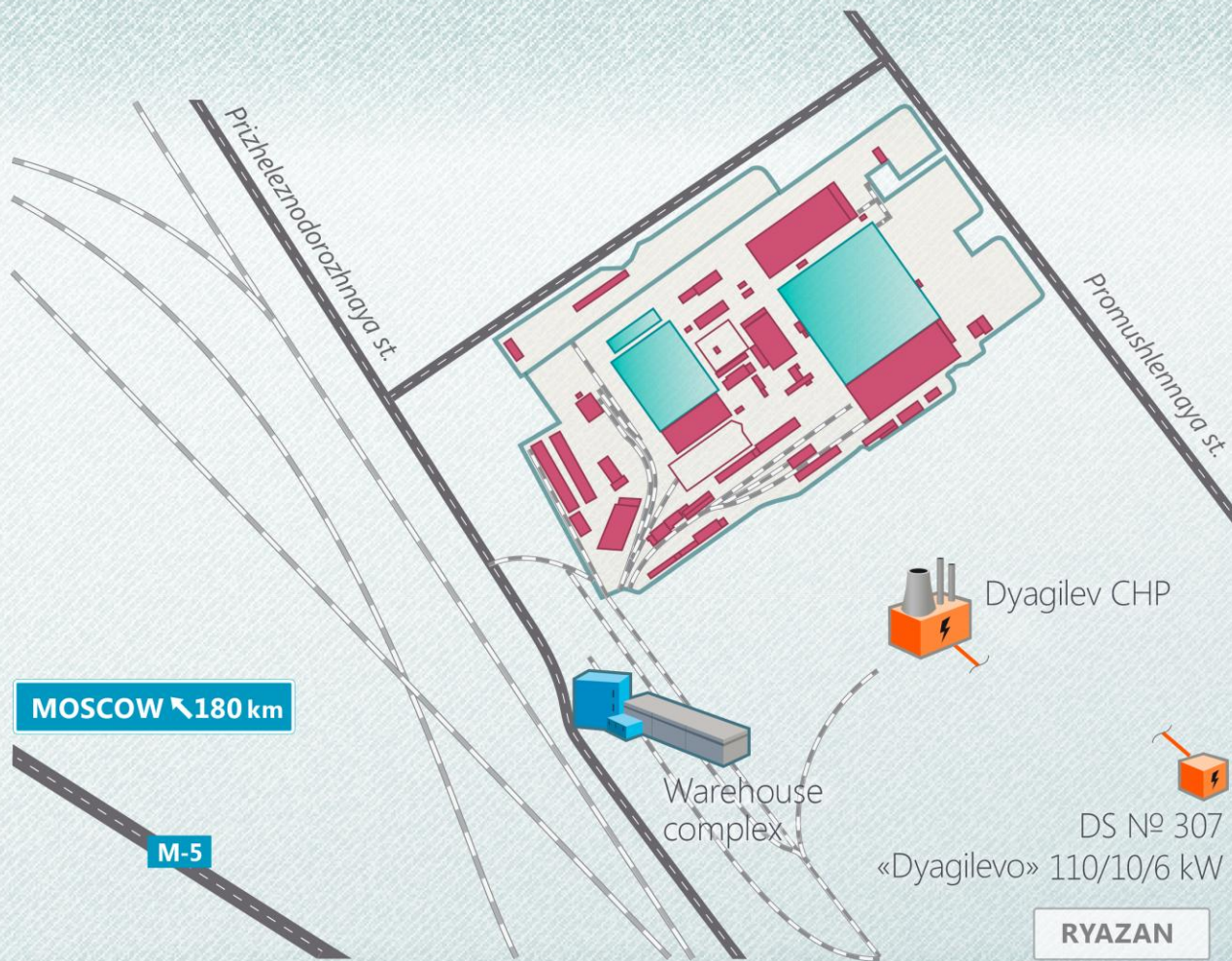
 — Resident: 25 companies including



- 
- 
- 
- 

 **АИП** Managing company «Liteishchik» LLC

(4912) 93-28-34
 v.ugolnikov@rsz.ru
 stanko-park.ru

INDUSTRIAL SITE «KONDRATA»



-  — 140 000 m² ind. premises, **free area 87 400 m²**, private ownership for land plot and buildings
-  — 29 MW
-  — 3,4K m³ per hour
-  — Own boiler
-  — 4 m³ per hour
-  — Resident:
200 small and medium enterprises

**Managing company
«Kondrata» LLC**

(4912) 95-69-04, 95-69-99
oip@admrzn.ru
admrzn.ru

FORMS AND AMMOUNT OF STATE SUPPORT

Amount of investment	Especially significant investment project	Priority investment project	Basic investment project
	no less than 1 bln. rubles	no less than 150 mln. rubles	no less than 25 mln. rubles or 10 mln. rubles (for SME)
Special conditions	Overall or partial financing at the expece of State (Public) corporations and companies in which participation in authorized capital of Russian Federation is more than 50%	Is being realized in prior areas of investment development:: <ul style="list-style-type: none"> ■ import substitution; ■ production on the territory of a monocity; ■ pharmaceutical production; ■ agricultural production; ■ production of vehicles; ■ introduction of energy saving techonologies, etc. 	Is realized in any direction of investment development
Corporate profit tax rate reduction from 20%			
to 15,5%		to 16%	
to 0%		to 0,6%	
Transport tax exemption			
✓		—	
Reduction of rent on land sites owned by the Ryazan Region			
on 99%		on 50%	
Provision of subsidies on the interest rates on loans compensation, leasing and connection to the power grids, gas pipelines, heat and water supplies			
✓		✓	
Reduction of Simplified Taxation System rate			
from 6% to 1% on the taxation object «income» from 15% to 5% on the taxation object «income reduced by expenses»			
State support			
For the period of the investment project but no more than 15 years For the period of modernization but no more than 5 years			

OUR INVESTORS



USA

«Guardian Glass Ryazan»
Glass production



France

«Air Liquide Ryazan»
Power gas production



Italy

«Automotive Lighting»
Automobile lighting technologies



Germany

«Mauser Group»
Industrial package production



Russia

Corporation «TechnICOL»
Waterproof materials



Germany

«Abicor Binzel»
Welding engineering



Japan

«Tatsuno Rus»
Equipment for refueling



Germany

«Fresenius Medical Care»
Healthcare



Russia

Data-center
IT



Russia

«EUROCEMENT Group»
Constructional material



Germany

Hypermarket «Globus»
Trade



Germany

Hypermarket «Obi»
Trade



Germany

Hypermarket «Selgros»
Trade



Germany

Hypermarket «Metro»
Trade



France

«Leroy Merlin»
Trade

CONTACT US



Government of
the Ryazan Region

+7 (4912) 29-04-04

ryazangov.ru



Ministry of Economic
Development and Trade of
the Ryazan Region

+7 (4912) 21-58-34

mineconom.ryazangov.ru
invest-r.ru

post62@mineconom.rzn.ru



КОРПОРАЦИЯ
РАЗВИТИЯ
РЯЗАНСКОЙ
ОБЛАСТИ

Ryazan Region
Corporation of Development

+7 (4912) 77-77-17

rrcd.ru

office@rrcd.ru

THANK YOU FOR YOUR ATTENTION!

